

Al Taqwa Heavy Equipment Rental



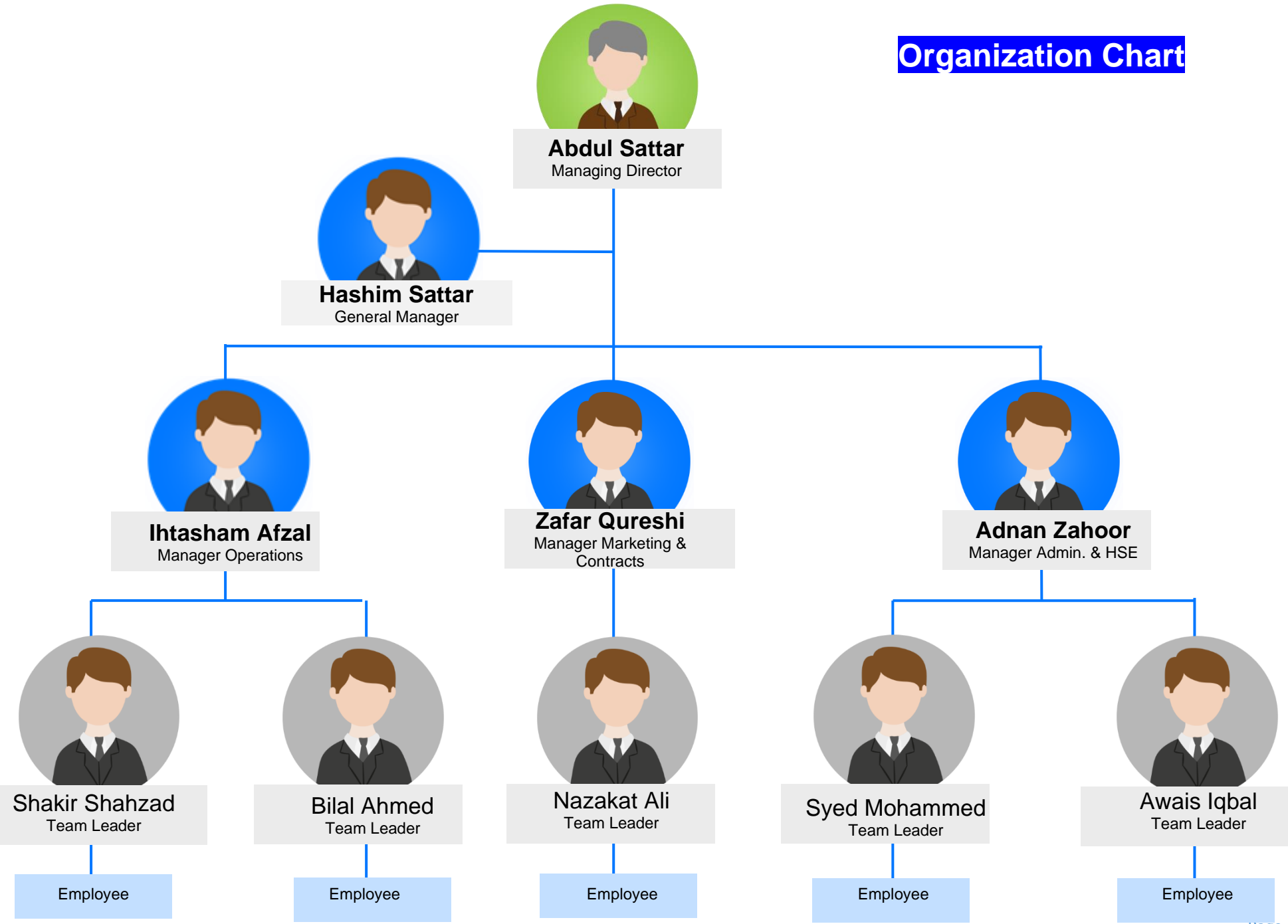
Organization Chart

With

Key Roles & Responsibilities

Ref. No. THE-PRO-002; 11-SEP-2023; REV. 01

Organization Chart



Key Roles & Responsibilities

Managing Director

- Provide overall leadership and strategic direction to the company.
- Set HSE and OHS objectives and ensure they are integrated into the company's goals.
- Allocate necessary resources to support HSE and OHS initiatives.
- Stay informed about industry-specific HSE regulations and trends.
- Review and approve major HSE policies and initiatives.
- Support a culture of safety and environmental responsibility throughout the organization.
- Hold executive management accountable for HSE performance.

General Manager

- Implement HSE and OHS policies and procedures at the operational level.
- Ensure that HSE and OHS goals align with the company's strategic objectives.
- Oversee the development and execution of HSE training programs.
- Monitor HSE and OHS performance metrics and report to upper management.
- Collaborate with other managers to integrate HSE and OHS into daily operations.
- Act as a liaison with regulatory authorities and auditors during inspections.
- Lead incident investigations and corrective action plans.
- Promote a culture of continuous improvement in HSE and OHS practices.

Manager Operations

- Implement and enforce safe operating procedures for heavy equipment.
- Ensure that equipment operators are adequately trained in HSE and OHS protocols.
- Schedule and oversee equipment maintenance to minimize safety risks.
- Monitor equipment performance to identify potential issues.
- Report and address operational safety concerns promptly.
- Collaborate with the HSE Manager to conduct risk assessments at job sites.
- Manage job site safety during equipment setup and operation.
- Maintain records of equipment maintenance and safety checks.

Manager Mkt. & Contracts

- Incorporate HSE and OHS requirements into customer contracts and agreements.
- Communicate HSE expectations to clients and contractors.
- Collaborate with the HSE Manager to evaluate contractor safety performance.
- Review and approve contracts and proposals for HSE compliance.
- Participate in client meetings to address safety and environmental concerns.
- Support the development of marketing materials highlighting the company's commitment to HSE.

Manager Admin. & HSE

- Develop and implement HSE policies and procedures.
- Coordinate HSE training programs for employees.
- Manage safety documentation, records, and incident reports.
- Conduct regular safety audits and inspections.
- Ensure compliance with HSE regulations and standards.
- Oversee the administration of safety-related permits and licenses.
- Lead emergency response planning and drills.
- Act as the primary point of contact for HSE-related matters within the company.